

St Mary's School



Hastings



Child Friendly Child Safe Policy

Child Friendly Child Safe Policy

St Mary's



Introduction

Our school is responsible for our care, safety and wellbeing.

- We have a Child Safe Policy so that everyone is respected and feels safe.
- It is important that we are listened to and have an opportunity to share our thoughts and opinions.
- We are a Child Safe School that values everyone feeling and being safe



Purpose

The purpose of this policy is to make sure that all students feel comfortable with the people around them.

Our teachers care about us and also make sure that we feel safe when we are at school, excursions and on camps.



Commitment to Child Safety

Our school is committed to keeping our students safe at all times.

Every student has the right to feel safe and be safe all of the time.



Rights & Responsibilities

- We have the right to be safe and the responsibility to report when we feel unsafe.
- We have the right to be respected and the responsibility to respect the safety of others.
- Everyone has the right to learn and we have the responsibility to learn.



Managing Risks

The school keeps us safe by-

- closing the gates
- teachers on yard duty wear bright vests so we can easily find them when we need support
- 'children only' toilets
- practice emergency drills for fire, intruder etc
- before every event, excursion or camp our teachers think about how to avoid situations that might be dangerous or that may hurt us.



Hiring staff to work with us

At St Mary's, our Principal Mrs Espenschied makes sure that the right person gets the job to work with us and that they are committed to keeping children safe.



Code of Conduct

Our school makes sure there is a Code of Conduct for all teachers, volunteers, admin staff, Casual Relief Teachers, parent helpers, other workers that describes how they should behave.

Just like we have the Positive Behaviour Expectations for St Mary's, the Code of Conduct is the expectation for adults.

**Good / Acceptable
behavior**

**Poor/ Unacceptable
behaviour**



Inclusion and Empowerment for all Students

St Mary's Primary School works with students to -

- ensure that they are empowered to understand their rights
- recognise and know what abuse is
- encourage them to speak up when they feel uncomfortable or afraid
- use their strategies to seek help, problem solved, helping hand, think feel act.



Valuing Differences

St Mary's values everyone's individuality.

We look after children with different abilities, backgrounds, beliefs and appearances. St Mary's aims to make everyone feel comfortable.



Visitors must sign in to the office

All adults in our school need to sign in to the office.

If you see an adult without a school lanyard / name badge you should let a teacher/ LSO know so they can take that person back to the office to sign in.

This includes ;

- ❑ Parent helpers
- ❑ Visitors
- ❑ Maintenance people like electricians, plumbers and builders
- ❑ Music teachers & Sports teachers



Responding & Reporting

Our teachers as well as other adults will listen to our problems on the yard, in the classroom and if we are having an issue at home. If it is a big problem sometimes other people are called in to help us solve the problem.



The Principal and teachers at St Mary's Primary School understand that it is important for all students to feel safe.

If you don't feel safe at school you can....

- ❑ use your helping hand
- ❑ let the teacher know you want to talk
- ❑ use your problem solved strategy
- ❑ tell the teacher on yard duty
- ❑ tell your class teacher or Learning Support Officer (LSO)
- ❑ tell a buddy
- ❑ let the office know there is an adult without a lanyard/ name badge
- ❑ Use the "I wish my teacher knew box"



I wish my teacher knew..

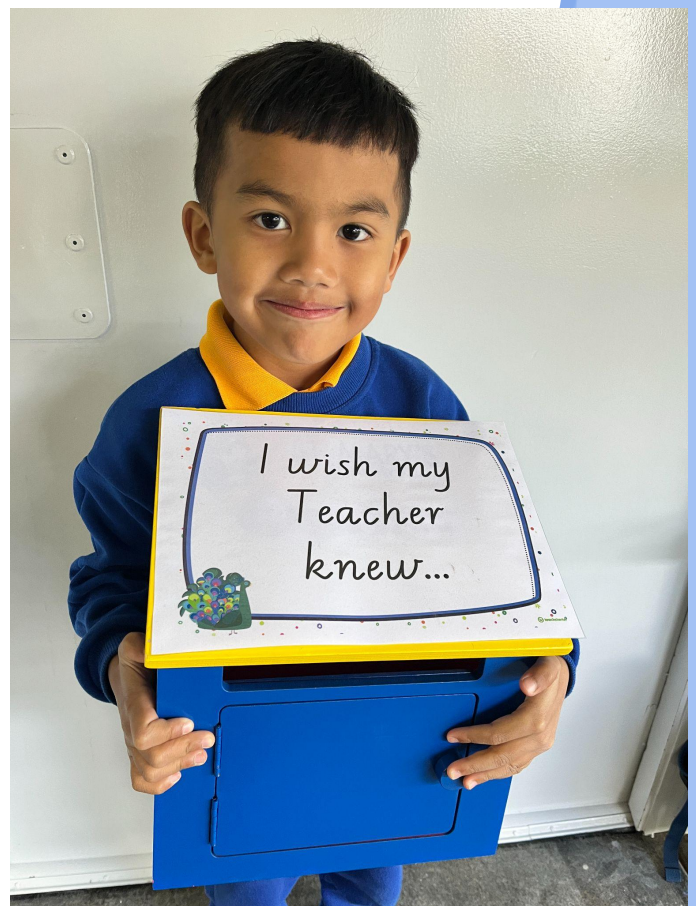
Every classroom has a “I wish my teacher knew..” box.

They provide us with a voice about anything that may be bothering us at school in class, outside on the yard as well as at home.

Our teachers regularly check the notes that are left by us.

Teachers follow up directly with these up in a general safe way during our class meetings and we set goals to meet the needs we have.

Teachers will discuss any serious issues with leadership and look to further ways of supporting us if necessary.

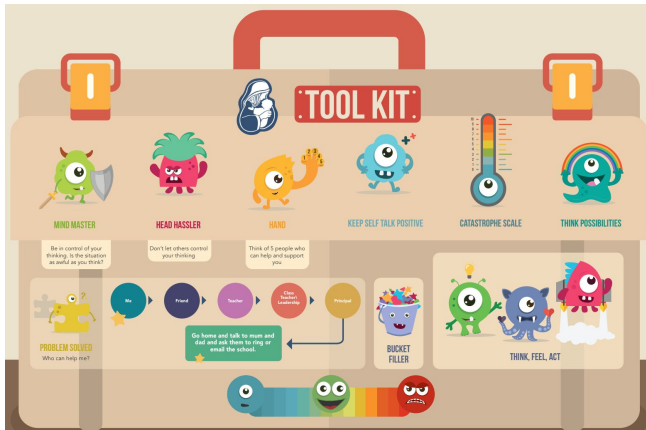


If you don't feel safe out of school you can...

- ❑ Talk to one or both of your parents/ carers
- ❑ Tell a trusted adult on your helping hand
- ❑ Call the Kids Helpline
- ❑ Tell a staff member at school



Posters around the school remind us all about child safety and how to ask for help.



My Body Safety Rules

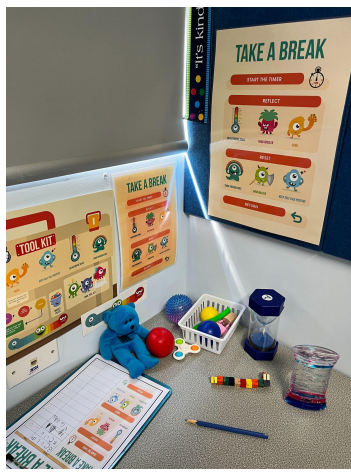
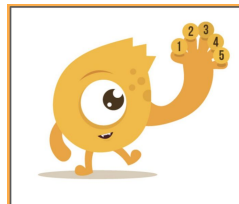
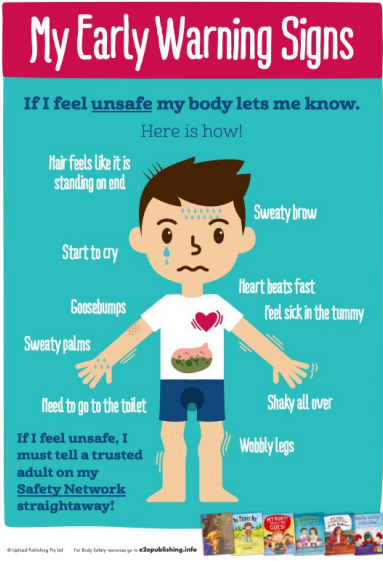
My body is my body and it belongs to me!
I can say, 'No' if I don't want to kiss or hug someone. I can give them a high five, shake their hand or blow them a kiss. I am the boss of my body and what I say goes!

I have a Safety Network
These are five adults I trust. I can tell these people anything and they will believe me. If I feel worried, scared or unsure, I can tell someone on my Safety Network how I am feeling and why I feel this way.

Early Warning Signs
If I feel frightened or unsafe I may sweat a lot, get a sick tummy, become shaky and my heart might beat really fast. These feelings are called my Early Warning Signs. If I feel this way about anything, I must tell an adult on my Safety Network straightaway.

Secrets
I should never keep secrets that make me feel bad or uncomfortable. If someone asks me to keep a secret that makes me feel bad or unsafe, I must tell an adult on my Safety Network straightaway!

Private Parts
My private parts are the parts of my body under my bathing suit. I always call my private parts by their correct names. No one can touch my private parts. No one can ask me to touch their private parts. And no one should show me pictures of private parts. If any of these things happen, I must tell a trusted adult on my Safety Network straightaway.



© Usborne Publishing Pty Ltd
For more information go to www.usbornepublishing.info

St Mary's has a Child Safety Team who support us all in this area. The team meets regularly and are active in promoting Child Safety in our school community.

Child Safety Team



**Gabrielle
Espenschied**
Principal



Lisa Galvin
Deputy Principal
and Wellbeing



**Christine
Freshwater**
Admin



Carol McMahon
Admin and
First Aid



**Lucette
Talbot**
Chaplain



Charli



Holly

Student Leaders



Allira



Jessica



Noah



Jed



Izaiah



Sierra



St Mary's Primary School



A place where all children have the right to feel safe and be safe all of the time.

Commission for Children and Young People.

- ❑ St Mary's Positive Behaviour Policy
- ❑ St Mary's Student Behaviour Policy
- ❑ St Mary's Bullying Policy
- ❑ St Mary's Learning Diversity and Adjustments Policy
- ❑ St Mary's Child Safety and Wellbeing Policy
- ❑ Child Safety Code of Conduct
- ❑ Child Friendly Child Safe Slideshow (student version)
- ❑ Child Friendly Child Safe Slideshow (staff and community)

